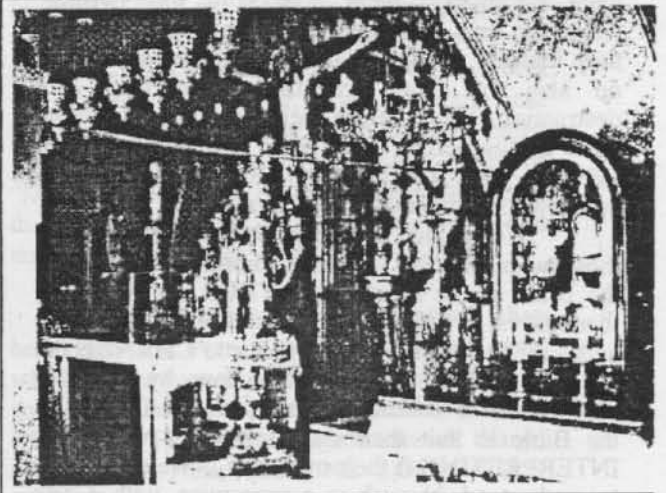
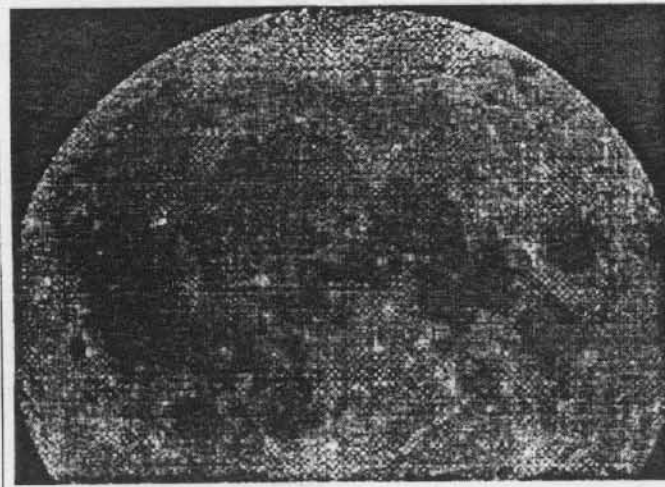
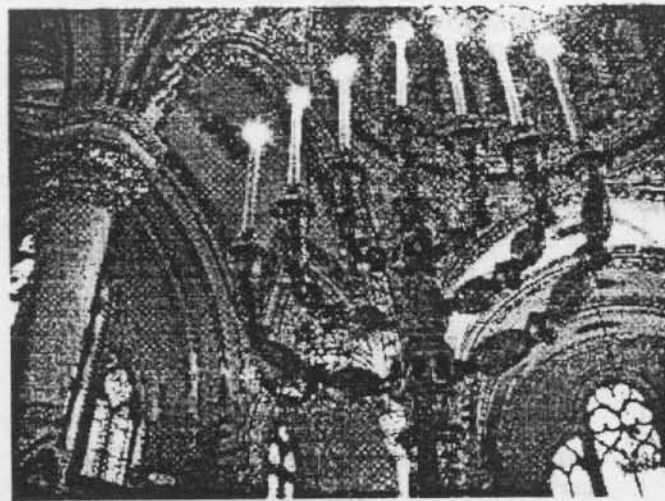


TRIUMPH
PROPHETIC
MINISTRIES

BIBLE

CORRESPONDENCE COURSE



Test 3

An Open letter from the Editor

Didn't you ever wonder WHY people talk about their various and different INTERPRETATIONS of the Bible?

Take, for instance, Romans 6:23. "For the wages of sin is DEATH: but the GIFT of God is ETERNAL LIFE through Jesus Christ our Lord." Most "Christian" religions INTERPRET THAT -- which is to say, they CHANGE ITS MEANING, to make it say precisely the opposite. They claim that the MAN is an "immortal soul." Man, therefore, they believe, already HAS eternal life -- he CANNOT DIE! So, they INTERPRET this verse to MEAN the very opposite of what it SAYS, thus: "The wages of sin is ETERNAL LIFE (in hell); and eternal life is NOT the gift of God."

There are others who INTERPRET "death" to mean "separation from God," and "gift of eternal life" to mean "eternal life which is NOT a gift, but which you already possess, spent in the geographical PRESENCE OF Christ."

This is the dishonest process by which religious bodies make the Bible say whatever they want it to say. Peter speaks of this twisting, distorting, and wresting of the Scriptures, "which they that are unlearned and unstable wrest, as they do also the other scriptures, unto their own destruction. Ye therefore, beloved, seeing ye know these things before, BEWARE lest ye also, being led away with the error of the wicked, fall from your own steadfastness" (II Peter 3:16-17).

We ought to understand, therefore, how those who, like the Roman Catholic Church, reject the Bible as the supreme AUTHORITY -- setting themselves, as a CHURCH, ahead of it as supreme authority (saying they have power to CHANGE the Bible -- as they claim to have done by changing God's Sabbath to Sunday); or those who CHANGE the Bible to suit their own ideas and wishes by INTERPRETING it their own way -- we ought now to understand how they compromise with God's Word and use it to further Satan's goal of destroying mankind.

Don't be a part of this evil system!

-- William F. Dankenbring

E-Mail: triumphpro@aol.com

TRIUMPH PROPHETIC MINISTRIES BIBLE CORRESPONDENCE COURSE

Published at Omak, Washington by Triumph
Prophetic Ministries (Church of God).

EDITOR AND DIRECTOR
William F. Dankenbring

**EDITORIAL AND PRODUCTION
ASSISTANT**
Cappy Dankenbring

YOUR ENROLLMENT has been paid by others. Bulk copies for distribution not given or sold. The Triumph Prophetic Ministries Bible Course is sent out free to all, no charge, so long as the Lord provides the income and finances to do this service to the public and all those who are seeking the truth of God.

ADDRESS COMMUNICATIONS to the Editor at the address below:

Triumph Prophetic Ministries
PO Box 842
Omak WA 98841

Email: triumphpro@aol.com

View online Bible Studies and our website at:
www.triumphpro.com

View our latest audios, videos, and articles at:
www.triumphpro.info

Listen to audio Bible Studies and messages at:
www.triumphpro.org

WHO, OR WHAT, IS YOUR GOD?

Just what determines who, or what, is your God? Actually, most people do not realize the true answer to that question! WHOever, or WHATEVER, you worship, fasten your affection on, and SERVE, is your "GOD."

One's country may – and sometimes becomes – one's "god." Through a wrong kind of patriotism, many people WORSHIP their country, "right or wrong." John in Revelation was inspired to write of such misplaced worship: "And they worshipped the dragon (Satan) which gave power unto the beast (Roman Empire or World Government); and they WORSHIPPED THE BEAST, saying, "WHO IS LIKE UNTO THE BEAST? Who is able to make war with him?" (Rev.13:4).

Satan is the god of this world (II Cor.4:4). But he does not appear as a red suited, pitchfork holding, dragon to people – but as an "angel of light" (II Cor.11:13-15). People worship Satan ignorantly, because he "appears" to be truthful, enlightened, and powerful. They become deceived by his deception and brilliance just as Eve was deceived in the garden of Eden!

Whoever or whatever you serve and obey becomes your god, ruler, and master. Paul wrote, "Know ye not, that to whom ye yield yourselves servants to obey, his servants ye are to whom ye obey, whether of sin unto death, or of obedience unto righteousness?" (Rom.6:16).

The very word, or title, "Lord," means MASTER, or RULER, one who has control, the one whom you OBEY! Jesus said many people would appear before Him in judgment, and say to Him, "Lord, Lord," yet would not make it into His Kingdom. He will answer them, "Why call ye me Lord, Lord, and DO NOT THE THINGS WHICH I SAY?" (Luke 6:46).

So let's understand this! The one whom you serve, follow, and obey, that is your GOD! If you follow the way of Satan, then he is your god – whether you are deceived, and do it ignorantly, or whether you do so knowingly!

The real question, then, is – WHO IS THE TRUE GOD?

There are many false gods, imposters, and frauds. There are many different religions in

the world – Shintoism, Hinduism, the Muslim religion, witchcraft, voodooism, etc., etc. Many different "gods" are worshipped on the earth! But there is only ONE TRUE GOD!

Jesus Christ said, to the Samaritan woman at the well, "You worship what you do not know; we [the Jews] know what we worship, for salvation is of the Jews. But the hour is coming, and now is, when the TRUE WORSHIPPERS will worship the Father [the true God] in spirit and truth; for the Father is seeking such to worship Him" (John 4:22-23). He added: "God is Spirit, and those who worship Him must worship in spirit and truth" (verse 24).

Jesus later prayed to the Father, Creator of heaven and earth, the true God, saying, "And this is eternal life, that they may know You, *the only true God*, and Jesus Christ [Yeshua the Messiah] whom You have sent" (John 17:3).

Muslims worship one whom they call Allah, Hindus worship various gods, but there is only ONE true God – the Creator of the heavens and the earth! The Scriptures reveal His name as YAHVEH – the "One who is, and who causes to be," the "Self-Existent One," or as Moffatt translates it, "The Eternal." The Hebrew letters yod, hey, vav, hey, called the "Tetragrammaton," or YHVH, spell out the name Yahveh, and refer to God as the Covenant God, who keeps His promises, and covenants with His people. He is the Redeemer, Saviour, the Salvation and Deliverer of His people! He is also called Elohim, which means "The Mighty One" or "Mighty Ones." The Scriptures reveal that both the Father, or Ancient of Days (Daniel 7:22), and the Word – the Logos – are "God" (John 1:1-3).

The apostle Paul reveals this truth when he writes, "For even if there are so-called gods, whether in heaven or on earth (as there are many gods and many lords), yet for us there is ONE GOD, THE FATHER, of whom are all things, and we for Him; and ONE LORD JESUS CHRIST, through whom are all things, and through whom we live" (I Cor.8:5-6).

Your GOD is the one whom you SERVE, follow, and OBEY – and WORSHIP, that is, hold in high esteem and revere! We worship the TRUE GOD by obeying Him, loving Him, keeping His commandments, and living according to His LAW, Torah, and Teaching!

Why Rest on God's SABBATH Day?

1. Which ONE of these four statements is TRUE?
 - A. True Christians have no sign by which God may recognize them as His own.
 - B. It makes no difference what day of the week one keeps.
 - C. One must keep the Sabbath to be saved.
 - D. One must keep Sunday to be saved.

2. The keeping of the Sabbath rest pictures
 - A. the rest which eternal death gives.
 - B. the rest we may have in God's Kingdom in efficient spirit bodies.
 - C. nothing at all --it is only a senseless command which must be obeyed.
 - D. a future life of complete idleness and ease.

3. Which ONE of these four statements is TRUE?
 - A. By their nature, it is natural for people to want to keep the Sabbath.
 - B. By nature, it is not natural for people to want to keep the Sabbath.
 - C. Failure to keep the Sabbath reveals an attitude of love toward God.
 - D. We can do as we carnally wish on the Sabbath.

4. The Sabbath rest was brought into existence by
 - A. a decree of the Roman Catholic Church.
 - B. a decree of the Protestant Church.
 - C. a decree of the Seventh Day Adventist Church.
 - D. God, Himself, resting on the 7th creation day.

5. The Sabbath
 - A. is twenty-four hours long.
 - B. is sixteen hours long.
 - C. is twelve hours long.
 - D. is six hours long.

6. God's weekly Sabbath Day corresponds to
 - A. Monday.
 - B. Wednesday.
 - C. Saturday.
 - D. Sunday.

7. The word "sanctify" means to set apart for
 - A. any purpose man wishes.
 - B. the purpose the Catholic Church wishes.
 - C. the holy purpose God wishes.

D. no special purpose at all.

8. God rested on the 7th day -- the Sabbath day -- as an example to man that man should

D. no special purpose at all.

A. work as hard as he can on the Sabbath.

B. rest on Sunday.

C. also rest on this particular day.

D. disregard His example.

9. The Sabbath was created by God for

A. only the Jews.

B. only the Gentiles.

C. only the Chinese.

D. all mankind.

10. God desires that His Sabbath Day be used by us for

A. going fishing.

B. going out on a big club party.

C. study, meditation, and catching up on little odd jobs that need to be done around the house.

D. Bible study, meditation, prayer, and rest.

11. Sabbath-keeping is a "sign" because

A. it constantly identifies God to us as the Creator of all things.

B. it constantly reminds us that man evolved from a monkey.

C. it reminds us that we can ignore God with impunity.

D. it reminds us that there is no God.

12. The keeping of the Sabbath by the Old Covenant Israelites was to remind them that

A. they were to go to heaven and fly around in idleness and ease.

B. they were to be made holy and were to lead the world to the same conditions of holiness.

C. they could pay no attention to God but just go on doing whatever they wanted to do.

D. they were not to become a nation of priests.

13. Today, are we who have become spiritual Israelites through Christ, to carry out the commission that Old Covenant Israel failed to do?

A. Yes, and the keeping of the Sabbath is to remind us, too, of this.

B. No.

C. Perhaps.

D. No, for it would not further God's coming Kingdom.

14. Does keeping the Sabbath keep us in mind of our Creator, our mission, and our destiny?

A. No, how could it?

B. God keeps us ignorant regarding all these things.

- C. Yes, for a just and loving God keeps us informed of the part He intends man to play in His great plan.
D. Perhaps.
15. The way we show God that we bear the Sabbath "sign" is
A. to carry a little card in our pocket so stating.
B. to carry a little banner that says we do.
C. to rest and draw close to God each Sabbath Day.
D. to go constantly to a church that rests on the Sabbath but does not keep God's other commandments.
16. Does God have a Time Plan?
A. No, for in the first place there is no God.
B. Preposterous! For everyone knows we go directly to Heaven when we die so there is no necessity for a time plan.
C. Perhaps.
D. He certainly does.
17. For creating all the yielding of mankind into very Gods like Himself, God has set a period of
A. 6,000 years.
B. 6,000 years followed by an additional 1000 year "millennial" period -- a total of 7,000 years.
C. -- He has not limited Himself to any particular period of time.
D. -- who can know?
18. The time we have left in which to bring all our daily actions into accord with the commandments of God before Christ comes is
A. extremely short!
B. limitless.
C. unimportant to know.
D. unknown.
19. One who persists in keeping Sunday as the day of rest and persistently refuses to keep the Sabbath, will
A. be praised by God for doing so.
B. suffer eternal death.
C. suffer very little.
D. be tormented for ages and ages in a fiery hell.
20. Which ONE of these four statements is TRUE?
A. Carnal-natured people love to keep the Sabbath.
B. We are not being put to God's supreme test in our keeping of the Sabbath.
C. We must keep the Sabbath as a rest day or never be fashioned into spirit beings.

D. Faith to know that all will turn out for the best if you keep the Sabbath is not necessary.

21. Which ONE of these four statements is FALSE?

- A. We will have God's divine support if we run into trouble in trying to keep the Sabbath.
- B. God will hear our prayers when we come boldly to Him for aid.
- C. We are to ask God for more faith to keep the Sabbath.
- D. It does not require faith to keep the Sabbath.

Lesson 10

Seventh-day SABBATH Continues Unchanged From Creation

22. Which ONE of these four statements is TRUE?

- A. One day of our week is no more important to God than any of the others.
- B. The Sabbath is God's supreme day of the week.
- C. The Sabbath commemorates no great change that God is bringing about within us.
- D. We have no particular reason to rejoice in keeping the Sabbath Day.

23. Which ONE of these four statements is TRUE?

- A. Many people knew the exact location of the seventh day Sabbath in the week at the time God created it, but God soon allowed its exact location to be lost until Christ came.
- B. The week -- six days followed by the exactly placed seventh day, the Sabbath, has remained unaltered from creation.
- C. Truly religious men between the flood of Noah's time and the coming of Christ never kept the Sabbath.
- D. None of the heathen who lived between the flood of Noah's time and the time of Christ knew of the true Sabbath Day.

24. After God created the Sabbath for man to keep

- A. He lost all interest in whether man would keep it or not.
- B. He decided He would not require man to keep it because it would require too much hard labor from man to do so.
- C. He realized that Sabbath-keeping by man would accomplish no useful purpose.
- D. He performed a great series of miracles extending over a period of 40 years to insure that man would keep it.

25. Which ONE of these four statements is FALSE?

- A. Christ, the son of God, could have "got by" and been transformed into the Kingdom of God without keeping the Sabbath Day while He was on earth.
- B. Christ attended church on the seventh day.
- C. Christ attended church on the Sabbath Day.
- D. Christ never attended church on the first day of the week.

26. Which ONE of these four statements is TRUE?

- A. Christ kept the Sabbath only after He was a man, so young people need not keep the Sabbath.
- B. Christ was not an example to us that we should keep the Sabbath as He did.
- C. God has left no examples in the Bible for us that we should keep the Sabbath as Christ did.
- D. Christ is our living example that all should keep the Sabbath as He did.

27. After Christ's death we find

- A. no Biblical examples that we today should keep the Sabbath.
- B. only the examples of the Apostles -- and not the Church -- that we should keep the Sabbath and not Sunday.
- C. Biblical examples of the Sabbath being kept by the Apostles and the New Testament Church -- examples to us that we today also should keep the Sabbath.
- D. Christ's Apostles all keeping Sunday.

28. The Bible shows that the Sabbath Day -- Saturday, the seventh day -- is to be kept by

- A. the Baptists only.
- B. the Methodists only.
- C. the whole world.
- D. Triumph Prophetic Ministries (Church of God) only.

29. If you have the same "one mind" of the Holy Spirit within you which Christ and the Apostles had, you will

- A. be keeping the Sabbath just as Christ and His Apostles did.
- B. not be keeping the Sabbath.
- C. be in great confusion as to just which day to keep.
- D. refuse to keep the Sabbath.

30. Which ONE of these four statements is FALSE?

- A. Sabbath-breaking is soon to bring the curse of captivity upon many Israelitish nations.
- B. True Christians should follow -- imitate -- the examples set by their neighbors who keep Sunday.
- C. True Christians follow -- imitate -- the Sabbath-keeping examples set by Christ.
- D. When the Jews got together again after they had been separated for hundreds of years they found that they were still all keeping the Sabbath Day.

31. Which ONE of these four statements is TRUE?

- A. We are to worry what will happen to us financially if we decide to keep the Sabbath.
- B. We are not to take any anxious thought over what will happen to us financially if we decide to turn ourselves resolutely to the keeping of the Sabbath.
- C. The Bible teaches that we are to be in such a quandary that we will make no decision at all whether or not to keep the Sabbath.
- D. The Bible does not teach us to curb our anxious thoughts of what might happen to us physically if we turn to obeying God.

32. What spiritual blessings may be ours if we have the Sabbath "sign" of obedience to God?
- A. We just go to heaven and lie around -- everyone "knows" that, for it is taught everywhere.
 - B. God does not promise us anything that will bring us close to Him.
 - C. God promises us a new name, positions of rulership, a place in His temple and a place within the new Jerusalem.
 - D. God keeps us in the dark as to these matters.
33. Which ONE of these four statements is TRUE?
- A. History shows that nothing has ever happened to people or nations when they did not keep God's Sabbath.
 - B. Punishment has happened but never has it been as severe as to take the lives of those who did not keep the Sabbath.
 - C. There is no way that we may know what might occur to those who refuse to keep the Sabbath.
 - D. Eternal death will occur to those who persistently refuse to keep the Sabbath.
34. Is it true that even Christ, Himself, had to keep the Sabbath -- the seventh day -- or die eternal death ?
- A. Yes.
 - B. No.
 - C. No, for God the Father would have made an exception in the case of His Son.
 - D. Possibly.
35. Should one prepare himself NOW for the eternal life he expects to live in the future?
- A. No, for there is no hurry .
 - B. Emphatically yes.
 - C. No, for there is not a time just ahead when the true knowledge of salvation will be blacked out by evil forces of the world.
 - D. Yes, but Sabbath-keeping does not really help to prepare one for eternal life.
36. Which ONE of these four statements is FALSE?
- A. Now that you are learning the truth from the Triumph Prophetic Ministries Bible Correspondence Course you should continue your membership in the worldly church you were in before you started taking this course.
 - B. Regardless of whether you do or do not withdraw your membership from your former worldly church, you will continue to receive this course. The decision is yours to make.
 - C. If one remains in a worldly church, knowing that he is in a worldly church, he is disobeying the command given in Eph. 5:11.
 - D. One may fellowship with God right in his own home on the Sabbath.
37. Is it all right for people to create their own Church to gather to discuss the Bible without a true minister?
- A. Yes, if a person leads the group who is "smarter" than the rest.

- B. No, it will only lead to division.
C. Yes, if the person who rises to lead the group has much worldly religious experience.
D. Yes, if the one who leads is a natural born leader.
38. Which ONE of these four statements is TRUE?
A. There are not many false ministers in the world today.
B. It's always easy to tell a true minister of God.
C. If one cannot fellowship with other brethren in the true Church, it is best to give up all contact with the Bible and the literature of the true Church.
D. If you have completely and fully repented -- are willing to accept and act on each new proof as it is revealed to you -- it may be possible for you to meet with others of like faith.
39. Who preserved the Old Testament (which included the Sabbath commandment)?
A. The Canaanites.
B. The tribe of Judah
C. The Greeks
D. The Idumeans.
40. God's calendar (as maintained by the Jews up to today) includes
A. days marked off for Sunday worship.
B. Catholic "saints" days.
C. which day to observe Christmas.
D. God's true Sabbath day and all the holy days (i.e. Passover, Pentecost).

Lesson 11

THE ORIGIN OF SATAN AND SUNDAY

41. Who is the great SPIRITUAL power influencing men in positions of great religious and political authority?
A. The European leader of the Fascist revival.
B. The great False Prophet.
C. Satan the Devil and his demons.
D. There is no spiritual power influencing this world's political and religious leaders.
42. How did Satan (formerly Lucifer) and his angels originate?
A. They didn't since they have existed eternally.
B. God created them as spirit beings.
C. God created them, but NOT before the earth was created.
D. The Devil and his demons do not exist - -they were merely imaginary forces of evil in the minds of ancient Jews.
43. What was Lucifer like when he was created?
A. He was human.

- B. He was one of God's own family.
- C. He was evil and ugly.
- D. He was perfect and beautiful, God's own anointed cherub.

44. What was the world like which was originally given to Lucifer?

- A. It was beautiful -- in perfect order.
- B. It was barren and hot.
- C. It was much like we see it now.
- D. It was in confusion.

45. Lucifer

- A. never was greedy.
- B. never let insurrection against God enter his mind.
- C. was perfectly content to rule this earth.
- D. attempted to seize God's heavenly throne.

46. Which ONE of these four statements is FALSE?

- A. The cosmic wreckage in the universe is mute testimony of Satan's rebellion.
- B. After his fall, Lucifer appeared as a voracious red dragon.
- C. Lucifer gained rule of all the heavens.
- D. One third of the angels followed Lucifer in his rebellion against God.

47. Has Satan given up his rebellion against God?

- A. Yes, because he knows he can't win.
- B. No. He is still determined to rule in spite of God.
- C. Yes, since he can no longer fight God because of being bound in hell.
- D. Yes, because the one third of the angels he led have deserted him.

48. Which one of these four characteristics did Lucifer fail to exercise?

- A. being a "morning star."
- B. Perfect character.
- C. Great knowledge.
- D. A beautiful spirit body.

C. 49. Why did God change Lucifer's name to Satan?

- A. Because of his great success as ruler of the earth.
- B. Because Satan means "righteous ruler."
- C. Because through his sin he became God's ADVERSARY -- opposed to God's government and purpose for mankind.
- D. Certainly not because he opposes God.

50. Sin was FIRST found in Lucifer when he

- A. became proud of his spiritual beauty and ability.
- B. turned against his own Creator in battle.

- C. thought to establish himself as a god.
 - D. exercised character in rejecting wrong thoughts.
51. How does the demon world unintentionally contribute to our character-building?
- A. By inspiring us to obey God.
 - B. By giving us the power to obey God.
 - C. By leaving us alone.
 - D. By subtle presentation of IMPROPER choices which WE MUST CHOOSE TO REJECT!
52. What is man's present relationship to angelic beings?
- A. Man is a little lower than angels.
 - B. Man is higher than angels.
 - C. Man is stronger than angels.
 - D. Man is equal to angels.
53. What is to be man's future relationship to angelic beings?
- A. Equal to angels.
 - B. Lower than angels.
 - C. Subject to angels.
 - D. Higher than angels.
54. What happened to the pre-Adamic earth as a result of Satan's rebellion?
- A. It became more beautiful.
 - B. It became ugly and confused, the INEVITABLE result of sin.
 - C. It didn't change at all.
 - D. It became a more suitable place in which to live.
55. Satan
- A. doesn't really exist, except as a concept in men's minds.
 - B. is not a personal arch-enemy to individual Christians.
 - C. hates anyone who could become one of God's sons.
 - D. isn't concerned with you if you can't be deceived.
56. Who is the god of this present evil world?
- A. Satan the Devil.
 - B. Jesus Christ.
 - C. Certainly not any spirit being.
 - D. Almighty God the Father.
57. Satan wants to thwart God's purpose for mankind because he
- A. hates the idea of God reproducing Himself.
 - B. wants more sons born into God's Family.
 - C. loves mankind.
 - D. believes God's purpose for man could not possibly succeed.

58. Which ONE of these four statements is FALSE?
- A. Satan, now defeated, obediently guides men to shape this world according to God's commands.
 - B. This present evil world agrees with Satan's perverse and evil character.
 - C. Satan considers man a usurper in his realm.
 - D. Satan is strengthening our character without intending to do so.
59. On which day was Satan's first "church service" held?
- A. On God's Sabbath -- Saturday -- the seventh day of the week.
 - B. Certainly not on Sunday -- the first day of the week.
 - C. On Satan's symbolic day of the sun -- Sunday.
 - D. It is not important which day it was.
60. Why did God create angels?
- A. God originally intended them to become His sons.
 - B. To be the servants of God and man.
 - C. Because He was lonely.
 - D. For no particular purpose.
61. Adam and Eve in the Garden of Eden acted out the part of the MAJORITY of mankind down through the ages in
- A. refusing to follow the dictates of Satan.
 - B. successfully finding their way to eternal life by doing what seems right to man.
 - C. being willing to accept Satan's way of disobedience to God.
 - D. rejecting Satan's line that man could live eternally in disobedience to God.

Lesson 12

BEWARE THE DAY OF THE SUN!

62. Which ONE of these four statements is FALSE?
- A. Satan did nothing which led to the ultimate destruction of the people who perished in the Flood.
 - B. Satan tried to destroy Christ.
 - C. Satan continually tries to destroy God's True Church.
 - D. Satan tries to destroy God's purpose for mankind.
63. The Devil
- A. and his henchmen earnestly desire to destroy God's True Church because it is God's Church which will be born again as God's spiritual sons.
 - B. is not greatly concerned with the few of God's True Church.
 - C. is not yet aware that God's Church will one day replace him.
 - D. is satisfied with having the vast majority deceived.
64. Why must God warn Christians they are in a contest for their lives against Satan?

- A. Certainly not because they would otherwise be unaware of it.
 - B. Obviously not because Satan is out to destroy them.
 - C. Simply because God hates Satan.
 - D. Because Satan is invisible -- not detectable by any of our five senses.
65. Satan the Devil
- A. has no power today to suggest wrong but attractive customs to human minds.
 - B. has ministers who appear to be ministers of Christ.
 - C. deceives only atheists -- certainly not ministers.
 - D. works through the Jews to impose his mark of Sabbath-keeping on the world.
66. Does Satan actively influence church organizations to help him in his battle against God and man?
- A. Yes, but only small pagan-appearing sects.
 - B. No. God doesn't allow Satan to influence churches.
 - C. Yes. Satan utilizes many large and small churches to disseminate his false doctrines.
 - D. Satan is not interested in churches.
67. Satan's churches
- A. teach for doctrines the opinions of men about the Bible.
 - B. have never been affiliated with this world's governments.
 - C. do not look like Christ's churches while they unwittingly teach Satan's lies.
 - D. never champion the goals of this world's society.
68. Whom do Sunday-"keepers" unwittingly worship as their god?
- A. Almighty God the Father who established Sunday at Creation.
 - B. Jesus Christ who established Sunday at His resurrection.
 - C. God's True Church which has the power to change God's commandments.
 - D. Satan the Devil, who has DECEIVED the WHOLE world! (II Cor.4:4; Rev.12:9)
69. How will the born-again sons of God Almighty appear?
- A. They will have glorious spirit bodies that shine brighter than the sun.
 - B. They will look just like we do today.
 - C. We can't know what God's sons will look like.
 - D. They will wear white robes and sandals and have wings.
70. Is Satan substituting an idol symbolizing himself for mankind to unwittingly worship today?
- A. Only the serpent -- such as the Mexican Indians worshipped.
 - B. No, Satan doesn't deceive men into worshipping idols today.
 - C. Yes, the sun.
 - D. No. Satan deceives men into worshipping him directly.
71. Which ONE of these four statements is TRUE?
- A. Satan himself has been known to enter into and POSSESS persons of great authority.

- B. Satan and his demons cannot influence human beings except by "possessing" them.
C. Demon possession is called the "Mark of the Beast."
D. The "Mark of the Beast" is human nature.
72. How did Sunday come to supplant the Sabbath as this world's day of worship?
A. By Christ's authority at His resurrection.
B. By Satanic deception -- carried over into "Christianity" from pre-Christian times.
C. By the authority of God's True Church.
D. By men finding it more convenient to worship on Sunday.
73. Which ONE of these four statements is TRUE?
A. God originally inspired the names of the days of today's week.
B. Calling the days of the week after the names of heavenly bodies has no religious significance.
C. Satan associated himself with the sun and caused men to name the first day of the week SUNDAY in honor of himself.
D. The serpent was never associated with the sun in pagan sun worship.
74. Has Satan used "great" men to promulgate worship on Sunday?
A. No, Satan can only control small, weak men.
B. No, for Satan does not work through human beings.
C. Yes, but only those in religious authority.
D. Yes, Constantine, for example a Roman Emperor and a man of great CIVIL authority.
75. Which ONE of these four statements is false?
A. Satan has given power and cunning to four mighty world-ruling empires.
B. Nimrod was one of the first after the flood to submit to Satan and flagrantly oppose God.
C. Semiramis, Nimrod's wife, continued promulgating Satan's deceptions by establishing a great false church.
D. Nimrod chose to reject Satan's ways and established the first great human government under God.
76. Satan
A. has guided only the ancient Babylonian Empire.
B. has worked through men called "Great" by historians.
C. is unable to dominate mighty military men.
D. has had no control of man's governments since the fall of Rome.
77. Those who refuse to receive Satan's "mark" voluntarily will be
A. forced to observe Saturday.
B. granted religious freedom.
C. given an alternate day -- like Thursday -- to observe.
D. tortured to the point of death in an attempt to force them to observe Sunday.

78. Which ONE of these four statements is TRUE?
- A. God will force you to accept His way.
 - B. God promises He will protect you from Satan and his demons if you choose His way and keep His Sabbaths.
 - C. It is impossible for anyone to choose rightly.
 - D. Satan will not try to force Christians to accept his ways.
79. How many days were dropped from the calendar during the time of Pope Gregory?
- A. Five days.
 - B. Two days.
 - C. Ten days.
 - D. Thirty days.
80. The present names for the days of the week came from
- A. The American Indians.
 - B. The Chinese.
 - C. Thomas Jefferson.
 - D. The Teutons of Germany.

Important! Have you filled in your name and address on your Test Sheet? If not, do so now!

FINAL INSTRUCTIONS

You have now completed another test in this Course. MAIL YOUR ANSWER SHEET BACK TO US. DO NOT FOLD OR WRINKLE YOUR ANSWER SHEET UNNECESSARILY! -- it will help us immensely to speed up the grading of the tests. DO NOT SEND ANYTHING ELSE WITH YOUR ANSWER SHEET. KEEP THIS QUESTION SECTION.

REVIEW these questions now and then. Why?

Because the review will give you the opportunity to impress the true answers more firmly in your mind.

Also, a review of the three false answers given here for each question will aid you in realizing more clearly some of the FALSE ideas which have taken hold in the world, and which you may have taken for granted in the past. By knowing the TRUTH and the common ERRORS, you will be better able to retain the TRUTH.



**Triumph Prophetic Ministries (Church of God) Bible
Correspondence Course**

Answer Sheet for Lessons 9-12

Name: _____

E-mail: _____

Address: _____

FAX: _____

City: _____

State & ZIP: _____

Country: _____

This is your test score.
This grade is not used to compare you with other students, but for you to determine how well you are doing.

Lesson 9

1. A _____ B _____ C _____ D _____
2. A _____ B _____ C _____ D _____
3. A _____ B _____ C _____ D _____
4. A _____ B _____ C _____ D _____
5. A _____ B _____ C _____ D _____
6. A _____ B _____ C _____ D _____
7. A _____ B _____ C _____ D _____
8. A _____ B _____ C _____ D _____
9. A _____ B _____ C _____ D _____
10. A _____ B _____ C _____ D _____
11. A _____ B _____ C _____ D _____
12. A _____ B _____ C _____ D _____
13. A _____ B _____ C _____ D _____

14. A _____ B _____ C _____ D _____
15. A _____ B _____ C _____ D _____
16. A _____ B _____ C _____ D _____
17. A _____ B _____ C _____ D _____
18. A _____ B _____ C _____ D _____
19. A _____ B _____ C _____ D _____
20. A _____ B _____ C _____ D _____
21. A _____ B _____ C _____ D _____

Lesson 10

22. A _____ B _____ C _____ D _____
23. A _____ B _____ C _____ D _____
24. A _____ B _____ C _____ D _____
25. A _____ B _____ C _____ D _____
26. A _____ B _____ C _____ D _____

27. A _____ B _____ C _____ D _____

28. A _____ B _____ C _____ D _____

29. A _____ B _____ C _____ D _____

30. A _____ B _____ C _____ D _____

31. A _____ B _____ C _____ D _____

32. A _____ B _____ C _____ D _____

33. A _____ B _____ C _____ D _____

34. A _____ B _____ C _____ D _____

35. A _____ B _____ C _____ D _____

36. A _____ B _____ C _____ D _____

37. A _____ B _____ C _____ D _____

38. A _____ B _____ C _____ D _____

39. A _____ B _____ C _____ D _____

40. A _____ B _____ C _____ D _____

Lesson 11

41. A _____ B _____ C _____ D _____

42. A _____ B _____ C _____ D _____

43. A _____ B _____ C _____ D _____

44. A _____ B _____ C _____ D _____

45. A _____ B _____ C _____ D _____

46. A _____ B _____ C _____ D _____

47. A _____ B _____ C _____ D _____

48. A _____ B _____ C _____ D _____

49. A _____ B _____ C _____ D _____

50. A _____ B _____ C _____ D _____

51. A _____ B _____ C _____ D _____

52. A _____ B _____ C _____ D _____

53. A _____ B _____ C _____ D _____

54. A _____ B _____ C _____ D _____

55. A _____ B _____ C _____ D _____

56. A _____ B _____ C _____ D _____

57. A _____ B _____ C _____ D _____

58. A _____ B _____ C _____ D _____

59. A _____ B _____ C _____ D _____

60. A _____ B _____ C _____ D _____

61. A _____ B _____ C _____ D _____

Lesson 12

62. A _____ B _____ C _____ D _____

63. A _____ B _____ C _____ D _____

64. A _____ B _____ C _____ D _____

65. A _____ B _____ C _____ D _____

66. A _____ B _____ C _____ D _____

67. A _____ B _____ C _____ D _____

68. A _____ B _____ C _____ D _____

69. A _____ B _____ C _____ D _____

70. A _____ B _____ C _____ D _____

71. A _____ B _____ C _____ D _____

72. A _____ B _____ C _____ D _____

73. A _____ B _____ C _____ D _____

74. A _____ B _____ C _____ D _____

75. A _____ B _____ C _____ D _____

76. A _____ B _____ C _____ D _____

77. A _____ B _____ C _____ D _____

78. A _____ B _____ C _____ D _____

79. A _____ B _____ C _____ D _____

80. A _____ B _____ C _____ D _____